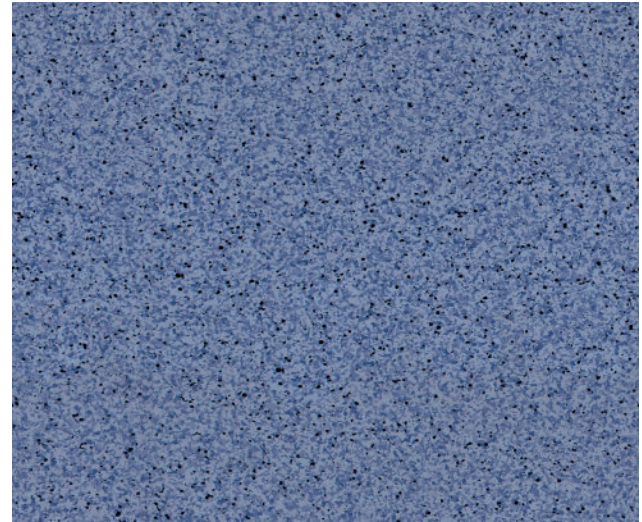


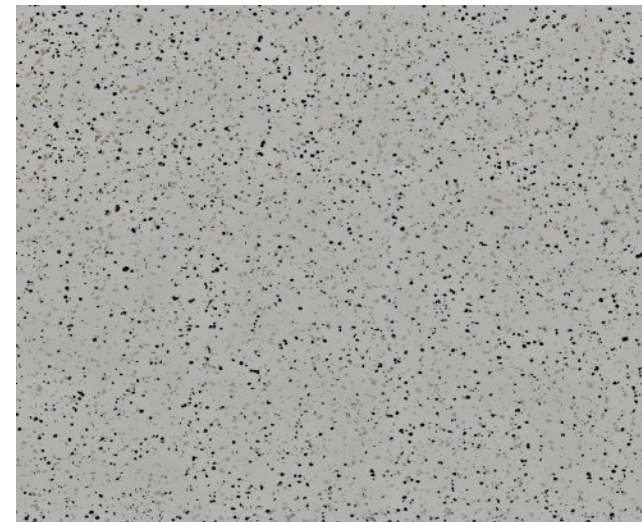
DESERT FLOOR



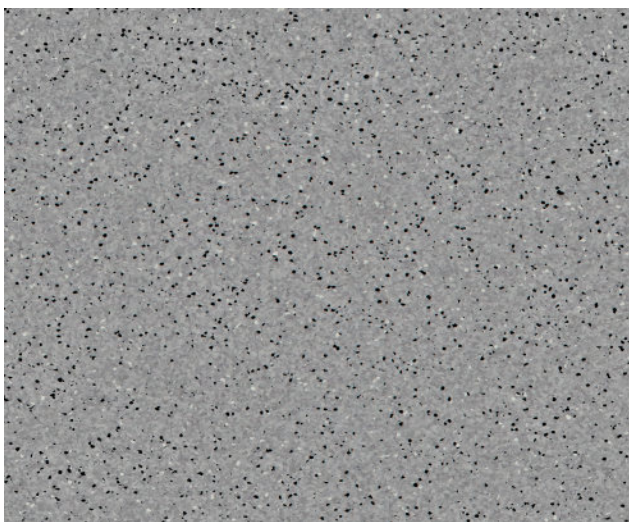
LILAC MEADOW



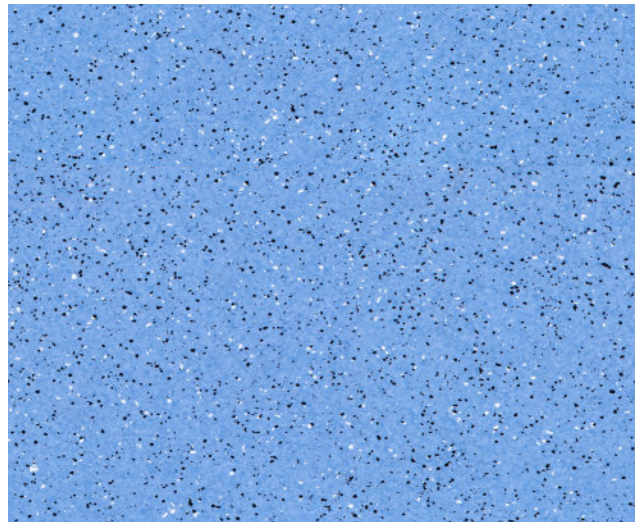
PINE FOREST



SANDY BEACH



SMOKY MOUNTAIN



SUMMER SKY

PRODUCT SPECIFICATIONS

PHYSICAL PROPERTIES

ASTM F-1700 <i>Solid Vinyl Floor Covering materials</i>	Conforms
Composition	Homogenous Sheet Vinyl
Recycled Content	N/A
Thickness (Gauge)	3.0 mm
Nominal Sizes	6'6" wide x 65' roll
Indoor Air Quality	FloorScore® Certified
ASTM E-84 <i>fire spread</i>	<75 (Class II)
ASTM E-648-06a <i>Critical Radiant Flux (CRF)</i>	>1.08 W/cm ² (NFPA 253 Class 1)
ASTM 662.06 <i>Smoke Density</i>	<.450
ASTM F-925-02 <i>Chemical Resistance</i>	Excellent
ASTM F-970-07 <i>Static Load</i>	2,500 PSI
Warranty	Lifetime static protection 5 year limited commercial warranty
Packaging	6'6" wide x 65' roll
Availability	Full rolls only

STATIC CONTROL PROPERTIES

Electrostatic Propensity (w/conductive footwear)	ANSI/ESD STM 97.2 — Less than 20 V
Electrical Resistance	ANSI/ESD STM 7.1 1.0 x 10 ⁶ — 1.0 x 10 ⁹ ohms
Electrical Resistance & Voltage <i>Generation Footwear/Flooring System</i>	ANSI/ESD S20.20-2014 Compliant when using approved footwear. Results within required limits: <1 x 10 ⁹ ohms and <100 volts peak
D.O.D. HDBK236A, Section 40.1.2	Meets recommended guidelines for sensitive ESD Devices, Class 1
FAA-STD-019f	Compliant
Motorola R56	Compliant
ATIS-0600321.2010	Compliant
Groundable Path	StaticSmart Ground Strip
Grounding Frequency	1 per 1,000 Square Feet
Adhesive Requirements	StaticSmart SDT+ Conductive Adhesive
Installation Requirements	Seam welding required



**This information is accurate and current but may be subject to change without notice. REV 02/20