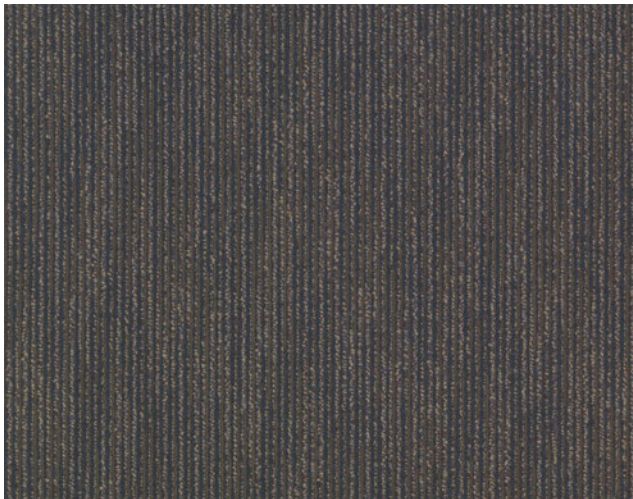




ADAMS/Standard Color



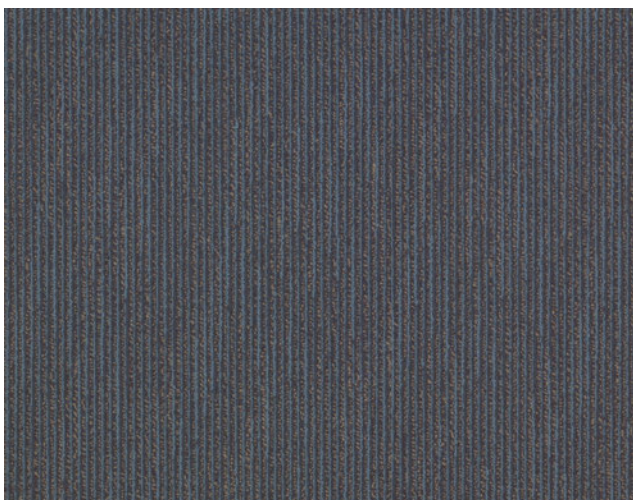
WASHINGTON/Standard Color



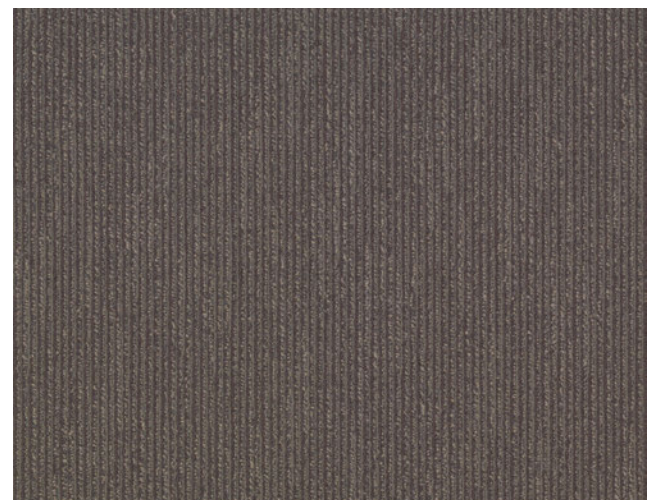
JACKSON/Standard Color



MADISON/Standard Color

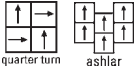


ROOSEVELT/Standard Color



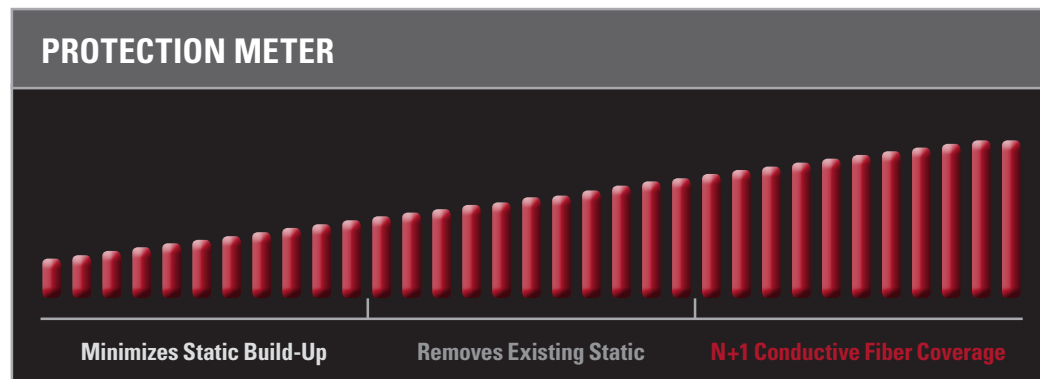
TRUMAN/Standard Color

PRODUCT SPECIFICATIONS

Style Name	Presidential Series
Construction	Tufted
Texture	Textured Loop
Gauge	1/10
Density	6,754
Recycled Content	42.1 %
Stitches per Inch	10.0
Average Pile Height	0.121 inch (3.07 mm)
Fiber	Premium Branded ECO Solution Q Nylon
Dye Method	100% Solution Dyed
Conductive Fiber Technology	Continuous Conductive StaticSmart FibreLink™ Monofilament in Every Tuft
Tufted Yarn Weight	22 oz. per sq. yd. (745.93 g/m ²)
Standard Size	24" x 24" (60.9 cm x 60.9 cm)
Primary Backing System	Conductive Non-Woven Synthetic
Secondary Backing System	Conductive EcoWorx® Backing: 100% PVC-Free, Phthalate-Free, Recyclable, and Made from Recycled Material
Protective Treatments	ssp® Shaw Soil Protection
Indoor Air Quality	Green Label Plus Certification
NSF 140	Platinum
Installation Method	 quarter turn ashlar
Flammability	ASTM E-648 Flooring Radiant Panel - Class 1 (Less than or equal to .45 W/cm ²)
Smoke Density	ASTM E-662 NBS - Less than 450
TARR (Texture and Appearance Retention Rating)	Heavy: >3.0
Warranty	Lifetime Limited Commercial Warranty Lifetime Static Properties
Availability	No Minimum Order Requirement

LEVEL 3 STATIC PROTECTION

Electrostatic Propensity	ESD STM 97.2 (w/Conductive Footwear) — Less than 20 Volts AATCC 134-06 (w/o Conductive Footwear) — Less than 0.4 kV (400 Volts)
Electrical Resistance	ESD S7.1/NFPA 99 Resistive/Resistance Characterization of Materials: RTT Six or More Readings Between Points Placed 3 Feet Apart. Tested with an Applied Voltage of 100V. Measured in Ohms, 2.5 x 10 ⁴ Minimum, 1.0 x 10 ⁸ Maximum. RTG Six or More Readings from Surface to Groundable Point. Tested with an Applied Voltage of 100V. Measured in Ohms, 2.5 x 10 ⁴ Minimum, 1.0 x 10 ⁸ Maximum Static Dissipative: 1.0 x 10 ⁹ Min., 1.0 x 10 ⁹ Max. Ohms Electrical Resistance / Voltage Test Footwear/Flooring System per ANSI/ESD S-20.20 - 2014 , Compliant when Using Approved Conductive Footwear. Results within Required Limits: < 1 x 10 ⁹ Ohms and < 100 Volts D.O.D. HDBK263A, Section 40.1.2: Meets Recommended Guidelines for Sensitive ESD Devices, Class 1 FAA-STD-019e, Motorola R56 and ATIS-0600321.2010 compliant Roller Caster Electrical Test (CET) Assessment: After 100,000 Chair Caster Cycles There was No Appreciable Change in Conductivity or Electrical Performance. Lab Data Available on Request
Groundable Path	StaticSmart Ground Strip or RTG Connector Kit
Grounding Frequency	1 per 1,000 Square Feet
Adhesive Requirement	Conductive Releasable Adhesive for Carpet Tile: 1.0 x 10 ⁹ Ohms RTT



eco•worx® tile



LEVEL 3 STATIC PROTECTION

*Ecoworx® is a registered trademark of Shaw, a Berkshire Hathaway Company **This information is accurate and current but may be subject to change without notice. REV 04/15