



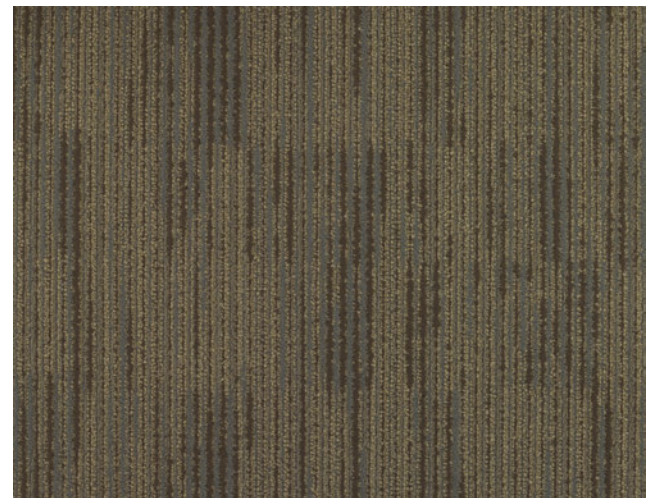
**YELLOWSTONE/Standard Color**



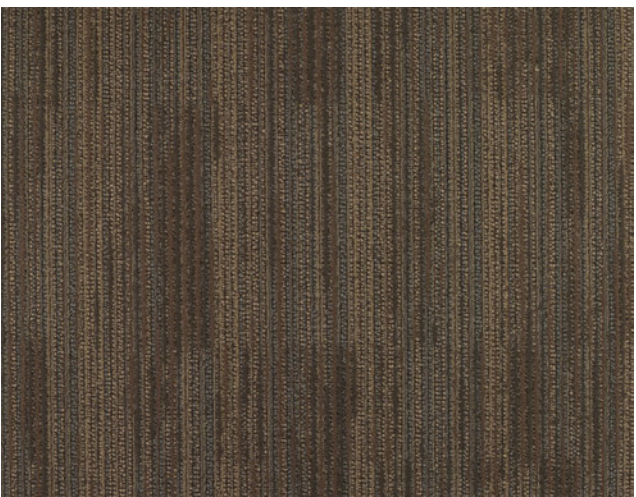
**SALT LAKE/Standard Color**



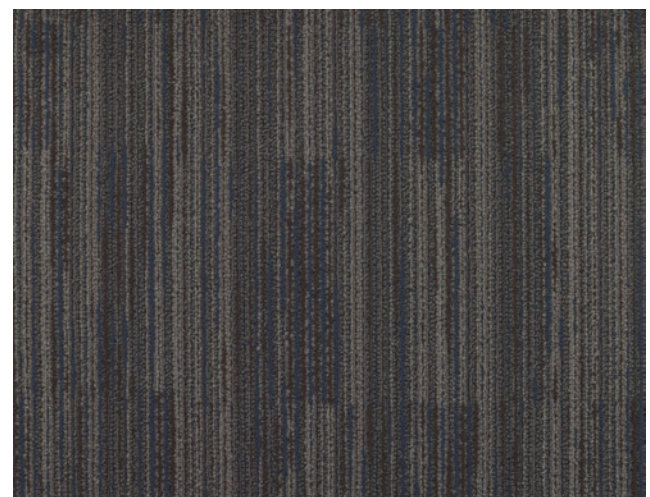
**RUSHMORE/Standard Color**



**GOLDEN GATE/Standard Color**

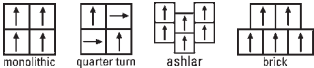


**HOOVER/Standard Color**



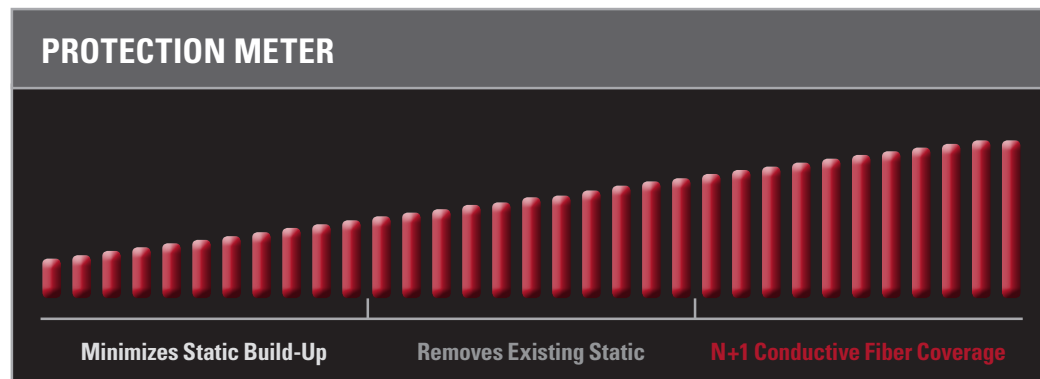
**NIAGARA/Standard Color**

**PRODUCT SPECIFICATIONS**

<b>Style Name</b>	Landmark Series
<b>Construction</b>	Tufted
<b>Texture</b>	Multi-Level Pattern Loop
<b>Gauge</b>	1/12
<b>Density</b>	6,284
<b>Recycled Content</b>	42.7 %
<b>Stitches per Inch</b>	11.0
<b>Average Pile Height</b>	0.110 inch (2.79 mm)
<b>Fiber</b>	Premium Branded ECO Solution Q Nylon
<b>Dye Method</b>	100% Solution Dyed
<b>Conductive Fiber Technology</b>	Continuous Conductive StaticSmart FibreLink™ Monofilament in Every Tuft
<b>Tufted Yarn Weight</b>	19 oz. per sq. yd. (644.2 g/m2)
<b>Standard Size</b>	24" x 24" (60.9 cm x 60.9 cm)
<b>Primary Backing System</b>	Conductive Non-Woven Synthetic
<b>Secondary Backing System</b>	Conductive EcoWorx® Backing: 100% PVC-Free, Phthalate-Free, Recyclable, and Made from Recycled Material
<b>Protective Treatments</b>	ssp® Shaw Soil Protection
<b>Indoor Air Quality</b>	Green Label Plus Certification
<b>Cradle to Cradle Certification™</b>	Silver level
<b>Installation Method</b>	 <p>monolithic    quarter turn    ashlar    brick</p>
<b>Flammability</b>	ASTM E-648 Flooring Radiant Panel - Class 1 (Less than or equal to .45 W/cm2)
<b>Smoke Density</b>	ASTM E-662 NBS - Less than 450
<b>TARR</b> (Texture and Appearance Retention Rating)	Severe Duty: > 3.5
<b>Warranty</b>	Lifetime Limited Commercial Warranty Lifetime Static Properties
<b>Availability</b>	No Minimum Order Requirement

**LEVEL 3 STATIC PROTECTION**

<b>Electrostatic Propensity</b>	<b>ESD STM 97.2</b> (w/Conductive Footwear) — Less than 20 Volts  <b>AATCC 134-06</b> (w/o Conductive Footwear) — Less than 0.4 kV (400 Volts)
<b>Electrical Resistance</b>	<b>ESD S7.1/NFPA 99</b> Resistive/Resistance Characterization of Materials: <b>RTT</b> Six or More Readings Between Points Placed 3 Feet Apart. Tested with an Applied Voltage of 100V. Measured in Ohms, 2.5 x 10 <sup>4</sup> Minimum, 1.0 x 10 <sup>8</sup> Maximum. <b>RTG</b> Six or More Readings from Surface to Groundable Point. Tested with an Applied Voltage of 100V. Measured in Ohms, 2.5 x 10 <sup>4</sup> Minimum, 1.0 x 10 <sup>8</sup> Maximum  Static Dissipative: 1.0 x 10 <sup>8</sup> Min., 1.0 x 10 <sup>9</sup> Max. Ohms  <b>Electrical Resistance / Voltage Test Footwear/Flooring System per ANSI/ESD S20.20 - 2014</b> , Compliant when Using Approved Conductive Footwear. Results within Required Limits: < 1 x 10 <sup>9</sup> Ohms and < 100 Volts  <b>D.O.D. HDBK263A, Section 40.1.2:</b> Meets Recommended Guidelines for Sensitive ESD Devices, Class 1  <b>FAA-STD-019e, Motorola R56 and ATIS-0600321.2010</b> Compliant.  <b>Roller Caster Electrical Test (CET) Assessment:</b> After 100,000 Chair Caster Cycles There was No Appreciable Change in Conductivity or Electrical Performance. Lab Data Available on Request
<b>Groundable Path</b>	StaticSmart Ground Strip or RTG Connector Kit
<b>Grounding Frequency</b>	1 per 1,000 Square Feet
<b>Adhesive Requirement</b>	Conductive Releasable Adhesive for Carpet Tile: 1.0 x 10 <sup>8</sup> Ohms RTT



eco•worx® tile



**LEVEL 3 STATIC PROTECTION**

\*Ecoworx® is a registered trademark of Shaw, a Berkshire Hathaway Company \*\*This information is accurate and current but may be subject to change without notice. REV 04/15